



EView/400i Discovery for HP UCMDB

Extending HP DDMA's Topology Discovery to include the iSeries (AS/400) environments.



Highlights

- *Extends HP UCMDB to include IBM iSeries (AS/400) Environments*
- *Seamless Integration with HP Discovery and Dependency Mapping Software (DDMA), Content Pack 10 for HP UCMDB*
- *Auto-populate and maintain the UCMDB with all major iSeries (AS/400) CI and CI relationships*
- *Reduce or eliminate decision times and errors resulting in providing increased productivity with intelligent automation*

EView/400i Discovery

IBM AS/400-iSeries environments continue to play a very critical part in today's corporate IT infrastructures, processing some of the most valued and important data. Successful organizations see the business need to include the iSeries (AS/400) data and identify iSeries (AS/400) configuration items, to know precisely how they are configured.

EView/400i Discovery for iSeries (AS/400), developed by EView Technology, helps companies manage the tasks associated with Change, Incident, Problem and other IT Service Management disciplines for iSeries (AS/400)-based Configuration Items (CIs). Adding the EView/400i Discovery agent to the HP Discovery and Dependency Mapping Advanced Edition (DDMA) for HP Universal Configuration Management Database (UCMDB) enables companies to view the iSeries (AS/400) CIs and their inter-relationships with distributed resources.

Through seamless integration with the HP DDMA software, EView/400i Discovery eliminates the need for high-level UCMDB or iSeries (AS/400) expertise. This tight integration of HP and EView solutions provide a comprehensive, accurate, and complete view of your iSeries (AS/400) infrastructure.

Map IT to your business

Achieving an enterprise view of your CIs demands a solution that provides visualization of both distributed and iSeries (AS/400) resources and uses automation to reduce the risk of errors during discovery and UCMDB repository population.

Many IT organizations turn to a UCMDB to create a shared single version to support Business Service Management, IT Service Management, Change Management, and Asset Management initiatives. These initiatives help align IT efforts with business requirements and run IT Operations more efficiently and effectively.

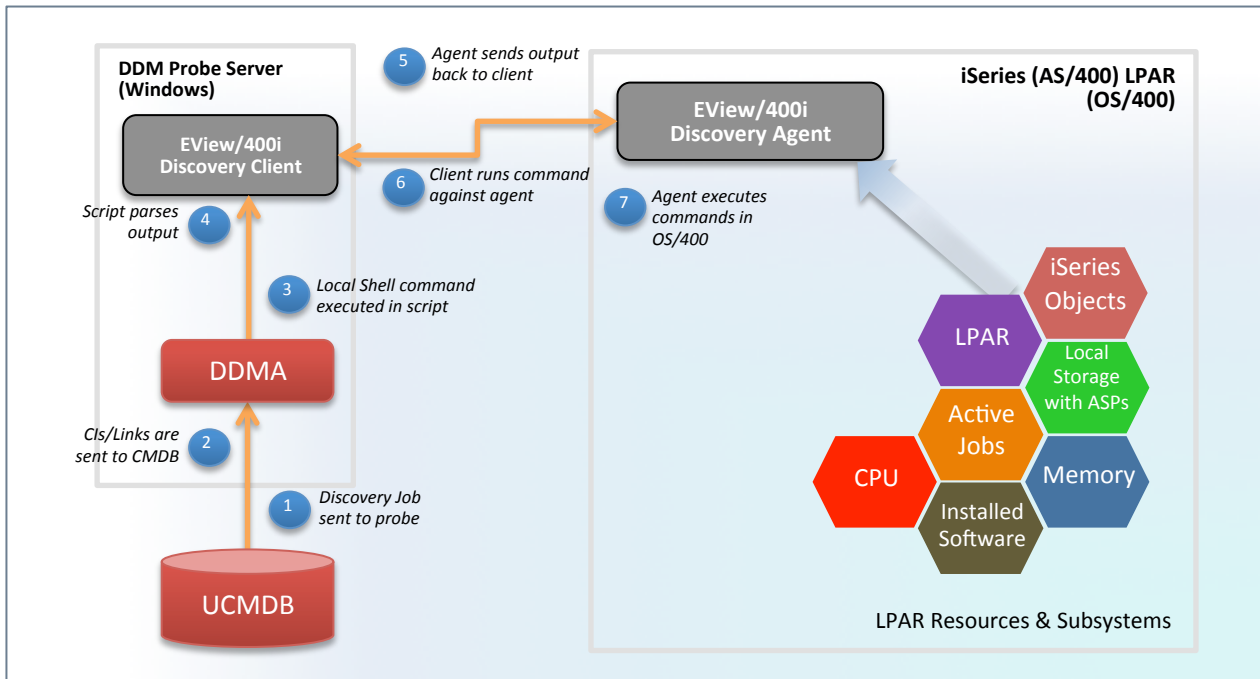


Figure 1
EView/400i Discovery flow.

How EView/400i Discovery Works

EView/400i Discovery works with the HP DDMA Content Pack 10 to provide the ability to visualize and understand the configuration items (CIs) and easily build an inventory of critical physical and logical entities along with their interrelationships. This information is then populated in the HP UCMDB to create a detailed model of your IT environment for service modeling and service impact analysis.

HP DDMA gives you the power to accurately discover what exists in your IT environment and map how it relates to other IT elements that support your business-critical services. This information is then stored in the HP UCMDB and made available to other solutions in your IT environment so that everyone in IT can use the same service context.

Through this process, EView/400i Discovery collects information about iSeries (AS/400) CIs to populate the HP UCMDB. The discovered information includes Resource and Object information. The highly flexible auto-discovery enables the HP UCMDB to maintain the most precise and current CI data, providing the enterprise a single point of accuracy for the iSeries (AS/400) data.

EView/400i Discovery is intelligently designed for minimal footprint and negligible system resource consumption, the discovery process is flexible and supports the ability to set specific auto-discovery parameters, based on your unique business needs.

EView/400i Discovery's seamless integration with HP DDMA provides organizations with an efficient and cost effective way to harness the power of the iSeries (AS/400) environment which is a crucial part of a comprehensive Enterprise IT strategy.

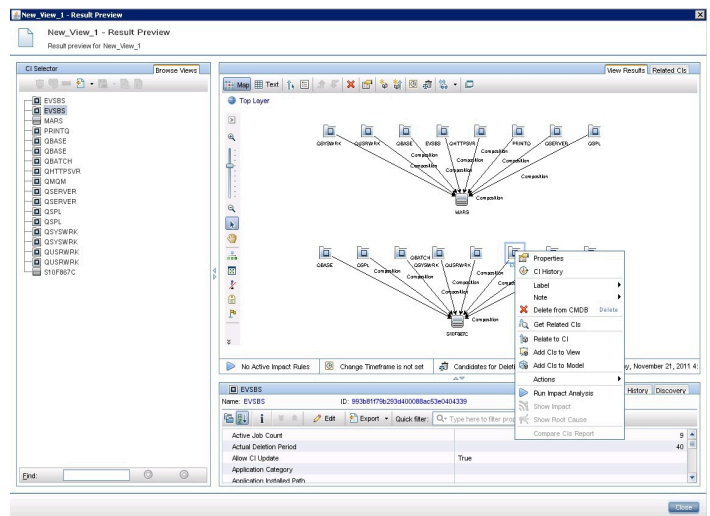


Figure 2
EView/400i Discovery seamless integration leverages the power and usability of the HP platform to deliver enterprise consolidation under a common UCMDB.



For more information on the HP DDMA and/or HP UCMDB, go to:

www.hp.com/software

Increase Business Agility by Mapping IT to the Business

In order to drive better business outcomes through technology, companies everywhere are looking to increase alignment between IT and line-of-business owners. As a result, many forward-looking IT organizations are using or considering initiatives such as IT Service Management (ITSM), business service management, change and configuration management, and business technology optimization.

Realizing success with these and other business-driven initiatives, organizations need to understand how IT assets and IT changes relate to business services, and have the ability to broadly discover IT assets and relationships that exist within and across the enterprise.

EView/400i Discovery, in conjunction with the HP DDMA Content Pack 10 for HP UCMDB, is a modular solution that addresses the entire spectrum of asset discovery activities. It replaces fragmented tools that require cumbersome and error-prone manual steps with a unified, automated process for identifying all assets in the environment. This automated process is accomplished by cataloging the CIs in a common database and keeping the data current by discovering changes and keeping data up to date.

EView/400i Discovery's powerful and comprehensive discovery engine for the HP UCMDB increases your business agility and speeds resolution processes by providing IT operations with visibility into the complex infrastructure that drives applications. EView/400i Discovery enables model extensions and specialized collectors for the HP UCMDB to ensure the IBM iSeries (AS/400) environments are full participants in the overall managed IT enterprise infrastructure.

Requirements

Hardware

- Ethernet hardware on the Discovery probe to communicate via TCP/IP. *(All other hardware requirements are the same as the requirements for HP UCMDB.)*
- Ethernet hardware on the iSeries (AS/400) system(s) to allow for TCP/IP communication with the UCMDB probe.
- EView/400i agent requires approximately 20MB of space on the iSeries (AS/400) system.

Software

- On the Discovery Probe:
 - Microsoft Windows 2003 Server or higher.
 - UCMDB DDMA Content Pack 10 with the iSeries (AS/400) Adapter. The TCP/IP network protocol stack must be active. Active Perl version 5.8 or later from www.activestate.com.
 - All other software requirements are the same as the requirements for HP UCMDB.
- Operating System:
 - OS/400 V5R1 or higher. *The TCP/IP network protocol stack (V3R1 or higher) must be active.*



About EView Technology

EView Technology's expertise and key focus is on providing solutions which automate IT Enterprise Operations by consolidating, real-time monitoring & automated control of IBM server environments (Mainframe-zSeries & iSeries-AS/400) into industry leading Operations Management enterprise platforms.

Customers select EView Technology for our expertise in Enterprise IT (IBM Platform) Management and unsurpassed support. Our team is committed to providing the best solutions that meet or exceed customer needs by delivering the highest level of individualized customer service to all of our customers. EView solutions are deployed in hundreds of customer locations in over 30 countries worldwide.

EView Technology has key industry partnerships which include the world's leading IT Enterprise Management providers, in order to provide the most reliable, complete and secure software solutions for your IT Enterprise environment. EView Technology is a member of IBM's PartnerWorld for Developers, HP Software Gold Business Partner, and Microsoft Development Partner.

EView Technology has a global network of software sales partners to assist in the sales and deployment of EView Technology solutions worldwide.

**HP Software
Gold Business Partner**



Microsoft
Partner Program



For more information on details and pre-requisites on the EView product family, go to:

www.eview-tech.com