

EView/390z Mainframe Discovery

for Micro Focus for Universal Discovery

Extending Micro Focus Universal Discovery's Topology Discovery (UD) to include the IBM mainframe/zOS environment



Highlights

- Builds on Micro Focus UD, extending its value to IBM mainframe/zOS Environments
- Seamless Integration
- Auto-populate and maintain the UCMDB with all major mainframe/zOS CIs and CI relationships
- Reduce or eliminate decision times and errors resulting in providing increased productivity with intelligent automation
- A complete end-to-end solution which includes the IBM mainframe/zOS environments.

IBM Mainframe and IBM i (iSeries-AS/400) environments continue to play a very critical part in today's corporate IT infrastructures, processing some of the most valued and important data. Organizations need to collect mainframe data, identify mainframe Configuration Items (CIs), and know precisely how they are configured. But the sheer number of interrelated IT components and configurations—as well as the constant changes introduced by business and technology needs—makes manual tracking difficult, if not impossible.

EView/390z Mainframe Discovery enables companies to manage the tasks associated with Change, Incident, Problem and other IT Service Management disciplines for mainframe (z/OS)-based Configuration Items (CIs). Adding the EView/390z Discovery agent to the Micro Focus (formerly HPE Software) Discovery and Universal Discovery (UD) for Micro Focus Universal Configuration Management Database (UCMDB) enables organizations to quickly view and easily build an inventory of critical physical and logical entities along with their interrelationships.

Through seamless integration with the Micro Focus UD software, EView/390z Discovery eliminates the need for high-level CMDB or mainframe/zOS expertise. This tight integration between Micro Focus and EView provides a comprehensive, accurate and complete view of corporate IT mainframe/zOS infrastructure for service modeling and service impact analysis.

Map IT to your business

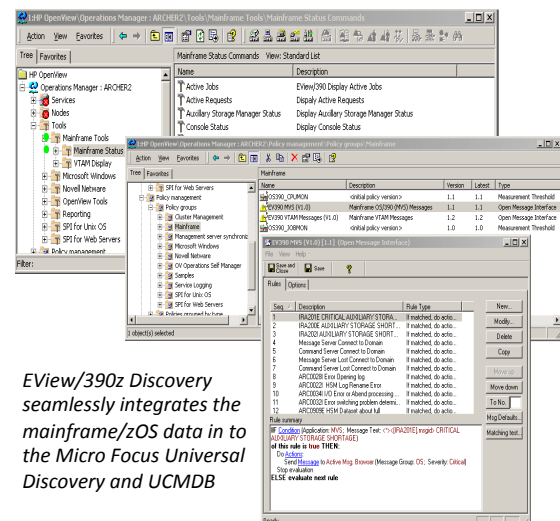
EView/390z Mainframe Discovery solution, along with Micro Focus UD and UCMDB, allows organizations to include mainframe transactions and IT processes under an consolidated, enterprise wide view. These initiatives help align IT efforts with business requirements and run IT operations more efficiently and effectively.

Achieving an IT Enterprise view of your CIs demands a solution that provides visualization of both distributed and mainframe/zOS resources and uses automation to reduce the risk of errors during discovery and UCMDB repository population.

Increase Business Agility

While populating the Micro Focus UCMDB is an excellent start, the real impact to the business is when your monitoring environment can dynamically deliver the service model with operational events and information. EView/390z Discovery is designed to ensure changes from the monitoring environment can be easily forwarded to the correct CI when used in a service management environment. Automating the process of manually building and maintaining the service model ensures the information is correct and up to date.

EView/390z Discovery's powerful and comprehensive discovery engine for the UCMDB increases your business agility and speeds resolution processes by providing IT operations with visibility into the complex infrastructure that drives applications. EView/390z Discovery enables model extensions and specialized collectors for the Micro Focus UCMDB to ensure the IBM mainframe/zOS environments are full participants in the overall managed IT enterprise infrastructure.



EView/390z Discovery seamlessly integrates the mainframe/zOS data in to the Micro Focus Universal Discovery and UCMDB

www.eview-tech.com
+1 919 878 5199
info@eview-tech.com

How EView/390z Discovery Works

EView/390z Discovery works with the Micro Focus UD to provide the ability to visualize and understand the configuration items (CIs) and easily build an inventory of critical physical and logical entities along with their interrelationships. This information is then populated in the UCMDB to create an accurate model of your IT environment for service modeling and service impact analysis.

Micro Focus Universal Discovery gives you the power to accurately discover what exists in your IT environment and map how it relates to other IT elements that support your business-critical services. This information is then stored in the UCMDB and made available to other operations teams so that everyone in IT can use the same service context.

Through this process, EView/390z Discovery collects information about mainframe/zOS CIs to populate the UCMDB. The discovered information includes: Resource and Object information. The highly flexible auto-discovery enables the UCMDB to maintain the most precise and current CI data, providing the enterprise a single point of accuracy for the mainframe/zOS data.

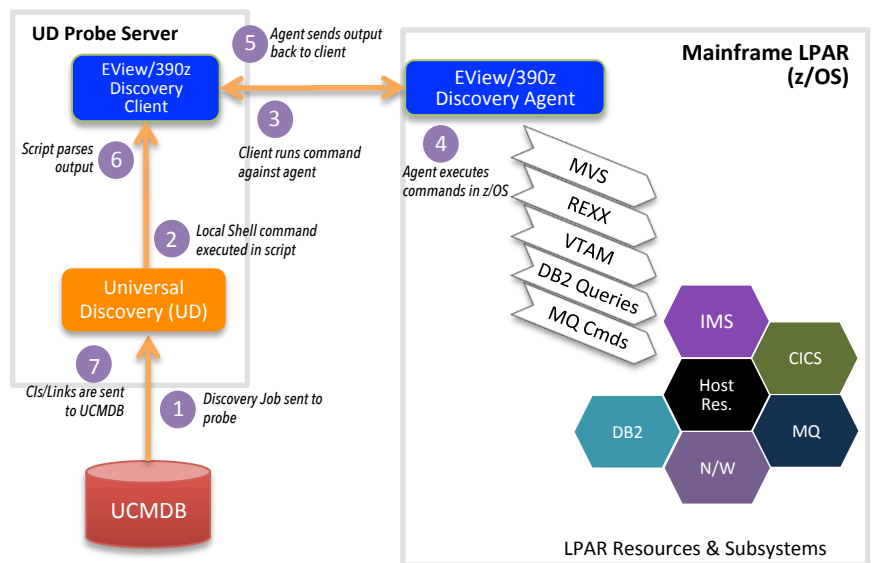
EView/390z Discovery is intelligently designed for minimal footprint and negligible system resource consumption, the discovery process is flexible and supports the ability to set specific auto-discovery parameters, based on your unique business needs.

EView/390z Discovery's seamless integration with Universal Discovery provides organizations with an efficient and cost effective way to harness the power of the mainframe/zOS environment which is a crucial part of a comprehensive Enterprise IT strategy.

What is Discovered

With EView/390z Discovery and Micro Focus Universal Discovery, IT organizations can now discover specific CIs for inclusion into a unified UCMDB. The discovered information includes:

- DASD Storage and Storage Groups
- CICS - regions, transactions, programs
- DB2 - DDF, DSG, databases, table spaces
- IMS - regions, databases, transactions, programs
- MQ (managers, channels, queues)
- Memory
- LPAR
- CPU
- Network Connectivity
- Installed IBM Software



Key Features and Capabilities

- Understand the potential impact of changes prior to executing them through predictive change impact analysis.
- Capture change history each time a change to a CI is discovered.
- Supports dynamic scheduling of discovery tasks to keep objects accurate and up to date.
- Faster application response time and improved data availability increase efficiency and streamline business problem detection and resolution.
- Accelerated access to data and comprehensive business intelligence
- Real-time partitioning of information from the mainframe/zOS across the enterprise aligns the entire IT infrastructure – including partitions and subsystems.
- Deploy changes to the infrastructure - quickly inventories the hardware platform and all major software subsystems.
- Enables IT to resolve the most urgent incidents faster by impact modeling to support predictive change impact analysis, and prioritize incidents by business service critically.
- Improve productivity by automating day-to-day tasks.
- Regular usage of EView/390z Discovery can be used as an audit tool in order to reconcile new or changed CIs.

Many of the world's top corporations, in over 35 countries, rely on EView as an integral part of their consolidated IT Operations infrastructure.

EView Technology is a Microsoft Cloud Solution Provider, Micro Focus Software Partner, Micro Focus Enterprise Management Alliance Partner, Splunk Development Partner, ServiceNow Partner, and IBM Development Partner.

Our technology partnerships

